

### From the CEO

The volume of water pumped by WMI in the March 2021 quarter was slightly higher than the previous year, however year to date (July to March) was 5% below the 5-year average.

WMI has completed the installation of new Siemens mag-meters and Datacall telemetry poles at all eligible outlets. The first testing phase of the system has been completed and updated firmware will now be rolled out for both meters and telemetry during the first two weeks of May. WMI has also commenced replacing all pump station meters with new Siemens mag-meters to complete the metering upgrade.

WMI has completed the hydraulic modelling for Coomealla which has identified possible pipeline upgrade options to improve service delivery and meet growing demand. These options will now enter a pre-feasibility and design phase. The third new KSB pump has recently been successfully installed at the Coomealla pump station as part of an annual pump upgrade over 5 years.



The third new KSB pump being installed at the Coomealla pump station in March.

### ACCC Murray Darling Basin Water Markets Inquiry – final report released

The long-awaited Final Report was released by the Australian Government on 26 March 2021, after 18 months of comprehensive investigation and consultation by the ACCC.

The ACCC report makes 29 recommendations centred on:

- Market integrity and conduct,
- Trade processing and water market information,
- Market architecture, and
- Governance of Basin water markets.

A major recommendation is for the establishment of an independent Water Markets Agency that will focus on ensuring Basin water markets are efficient and fit-for-purpose.

Interestingly, the ACCC did not find evidence that investors exercised market power or manipulated markets to increase water prices in the Southern Connected Basin.

The report can be found on the ACCC website ([www.accc.gov.au](http://www.accc.gov.au)) and a public forum is being held on **Monday 19 April** at the **Alfred Deakin Centre** in Mildura at **1pm** to hear directly about the findings and recommendations.

#### Third Quarter Invoice 2020/21

due for payment:  
4.30pm on  
Friday 7 May 2021

**On-call Officer**  
24 hours/365 days  
Ph: 0428 596 428

**Office Hours: 9.00am to 4.30pm**  
Monday to Friday, excl public holidays

Contact us:  
T: (03) 5027 4953  
F: (03) 5027 4880  
E: [enquiries@westernmurray.com.au](mailto:enquiries@westernmurray.com.au)  
[www.westernmurray.com.au](http://www.westernmurray.com.au)

#### Upcoming office closures:

**Queen's Birthday**  
Monday 14 June 2021

### Terminated Delivery Entitlements (DE's)

There seems to be a perception that terminated DE's can be re-issued unencumbered (or without a termination fee) after ten years.

WMI can confirm that once DE's are terminated, they no longer exist.

New DE's may be issued and charged the normal termination fee if they are subsequently terminated.

WMI also provides the option of temporarily trading DE's between customers within the same irrigation area.

The updated Water Charge Rules came into effect on 1 July 2020 and are based on advice provided by the ACCC to the federal Water Minister on 21 September 2016.

### MDBA visit: managing delivery risks

MDBA staff visited WMI on 23 February to discuss managing delivery risks in the River Murray system.

NSW DPIE Water also participated in the presentation.

Information presented included:

- climatic trends,
- horticultural planting trends,
- water use and timing trends,
- Barmah Choke capacity reduction,
- shortfall response planning, and
- options for improving delivery capacity.

It was interesting to learn that an estimated 77,000 cubic metres of sand has been identified in the Choke thought to be deposited through historical land-use

changes, gold mining, snag removal and river regulation.

WMI is pleased to see that the MDBA has commenced a pre-feasibility study into options to manage water flow through the Choke.

You can watch a recorded webinar on this topic on the MDBA website [www.mdba.gov.au/webinars](http://www.mdba.gov.au/webinars)



MDBA staff met with WMI Directors and management in February.

### NSW Government water charges update

NSW government water charges are set to increase from 1 July 2021.

WMI has been working closely with NSW Irrigators Council in advocating against the massive increases proposed by the NSW government water agencies.

The NSW Independent Pricing and Regulatory Tribunal has recently reviewed the proposed price increases from WaterNSW and the Water

#### Third Quarter Invoice 2020/21

due for payment:  
4.30pm on  
Friday 7 May 2021

**On-call Officer**  
24 hours/365 days  
Ph: 0428 596 428

#### Office Hours: 9.00am to 4.30pm

Monday to Friday, excl public holidays

Contact us:

T: (03) 5027 4953

F: (03) 5027 4880

E: [enquiries@westernmurray.com.au](mailto:enquiries@westernmurray.com.au)

[www.westernmurray.com.au](http://www.westernmurray.com.au)

#### Upcoming office closures:

**Queen's Birthday**  
Monday 14 June 2021

Administration Ministerial Corporation and has set more modest price increases.

The indicative increase for a NSW Murray High Security water user is 15.6%.

The NSW government fixed and variable charges recovers the costs of government services provided by WaterNSW; the Water Administration Ministerial Corporation and the NSW Government's contribution to the MDBA. They are pass-through charges on WMI billing.

### WMI Charges review update

WMI has teamed up with water economic experts at Aither to develop a customer impact model to test various pricing scenarios.

A separate study undertaken by GHD has reviewed the Asset Replacement Fund and its associated fee.

The Charges review aims for simplification of the charges and fees; fairness (user-pays principle); efficient use of water infrastructure assets and financial sustainability for the company.

### Winter maintenance program 2021

We have our scheduled winter maintenance program, planned for the 2021 winter period, with the main tasks including:

#### Buronga

- install new pump station mag-meter on 3 May requiring complete shutdown from 7am to late afternoon. Customers will be notified directly,

- install low-river pump for Mildura weir maintenance 12-30 July; supply will be restricted to 100L/s during this period, and
- Alcheringa relief – upgrade PLC.

#### Coomealla

- install 6 new pump station mag-meters ,
- replace motor on pump C – for overhaul,
- balance tower inspection and maintenance,
- relief – upgrade PLC, and
- relief – bearings replace on pump 2.

#### Curlwaa

- install new pump station mag-meter, and
- balance tower inspection and maintenance

#### Mourquong

- WMI continues to maintain the Mourquong pump station, pipelines and outlets based on a service agreement.

WMI endeavours to minimise any interruptions and will alert customers to any planned or unplanned events.

### Clearances from WMI infrastructure

The WMI Board has recently updated the Clearances Policy.

Customers are required to notify WMI of any proposed works near WMI infrastructure. WMI may be required to identify the location of infrastructure and authorise and inspect any proposed works.

The minimum distance to be maintained from the outside edge of WMI's infrastructure is 3 metres.

The minimum distance when crossing over WMI pipes is 300mm vertically with a minimum of 600mm cover.

**Third Quarter Invoice 2020/21**  
due for payment:  
4.30pm on  
Friday 7 May 2021

**On-call Officer**  
24 hours/365 days  
Ph: 0428 596 428

**Office Hours: 9.00am to 4.30pm**  
Monday to Friday, excl public holidays

Contact us:  
T: (03) 5027 4953  
F: (03) 5027 4880  
E: [enquiries@westernmurray.com.au](mailto:enquiries@westernmurray.com.au)  
[www.westernmurray.com.au](http://www.westernmurray.com.au)

**Upcoming office closures:**

**Queen's Birthday**  
Monday 14 June 2021

Care must also be taken when moving or storing heavy equipment/machinery.

The full Clearances Policy is available on the WMI website.

Remember, if you are considering developing or undertaking works on your property, contact WMI to discuss clearances to protect WMI infrastructure and avoid service disruption and costs.

Customers will be held accountable for any damage inflicted to WMI infrastructure.

### Third quarterly invoice due for payment

Customers are reminded that all accounts now receive quarterly invoices.

The third quarter invoice for 2020/21 is now available and due for payment on or before Friday 7<sup>th</sup> May 2021.

Please contact the office before the due date if there are any difficulties in prompt payment of accounts.

For customers' convenience, there are several options available for payment of invoices:

- **Direct Debit** – contact the office for a form and your invoiced amount can be paid directly from your nominated bank account on the due date,
- **Credit Card** – you can phone the office to use this option,

- **EFT** – pay directly from your bank account to WMI's; details are at the bottom of page 2 of your invoice,
- **BPAY** – details are at the bottom of page 2 of your invoice. To ensure your payment is correctly allocated, please use the correct reference number.
- **Cheque** – by mail or in person,
- or, you can pay in person at the office.

### Additional Water Fee reminder

Water usage above allocation is billed quarterly at \$1,200/ML.

Please ensure you **always have a positive water allocation balance** in order to meet your needs for the current irrigation season. Customers should contact the friendly office staff for more information.

### End of year surplus allocation water trade

Customers are strongly encouraged to undertake their own individual trade up to the WMI cut-off date of 10am Monday 28 June 2021 to maximise returns.

WMI customers who have allocation to sell are encouraged to contact the office as there are customers who are looking to buy. WMI can facilitate an internal trade quickly and at very low cost.

**Third Quarter Invoice 2020/21**  
due for payment:  
4.30pm on  
Friday 7 May 2021

**On-call Officer**  
24 hours/365 days  
Ph: 0428 596 428

**Office Hours: 9.00am to 4.30pm**  
Monday to Friday, excl public holidays

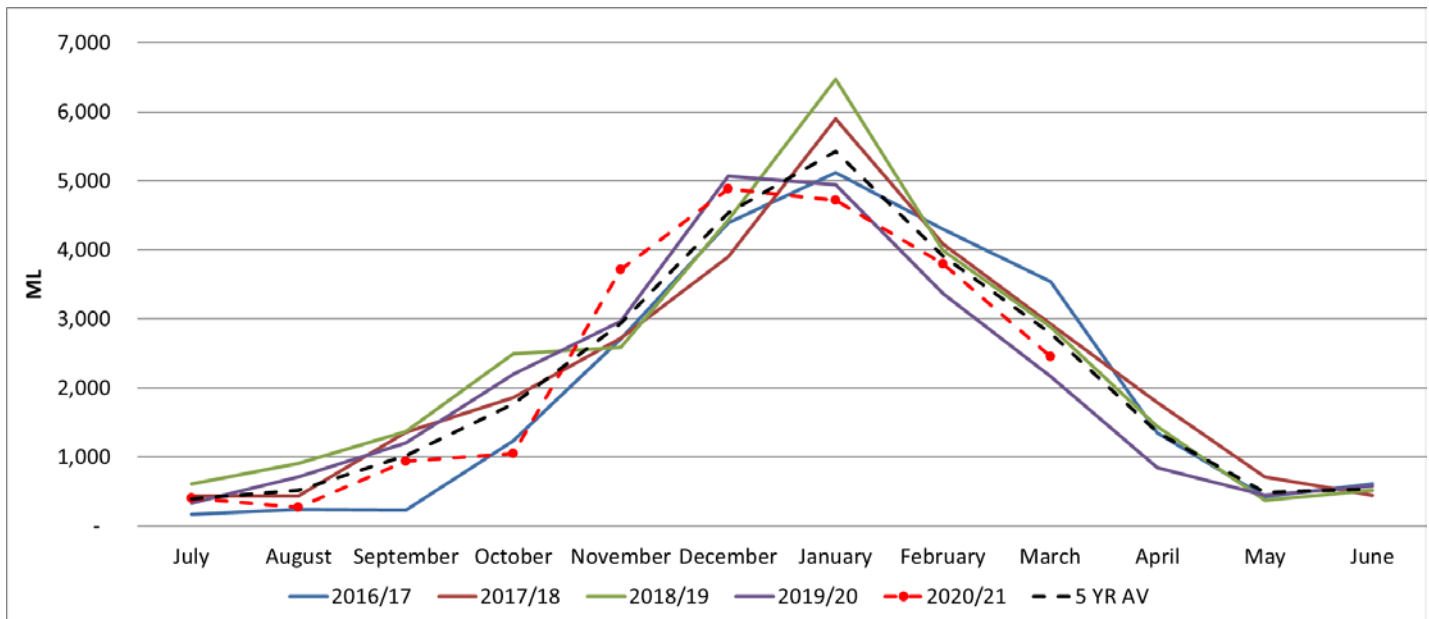
Contact us:  
T: (03) 5027 4953  
F: (03) 5027 4880  
E: [enquiries@westernmurray.com.au](mailto:enquiries@westernmurray.com.au)  
[www.westernmurray.com.au](http://www.westernmurray.com.au)

**Upcoming office closures:**

**Queen's Birthday**  
Monday 14 June 2021



### Total Water Pumped over 5 Years



#### Third Quarter Invoice 2020/21

due for payment:  
4.30pm on  
Friday 7 May 2021

**On-call Officer**  
24 hours/365 days  
Ph: 0428 596 428

**Office Hours: 9.00am to 4.30pm**  
Monday to Friday, excl public holidays

Contact us:  
T: (03) 5027 4953  
F: (03) 5027 4880  
E: [enquiries@westernmurray.com.au](mailto:enquiries@westernmurray.com.au)  
[www.westernmurray.com.au](http://www.westernmurray.com.au)

#### Upcoming office closures:

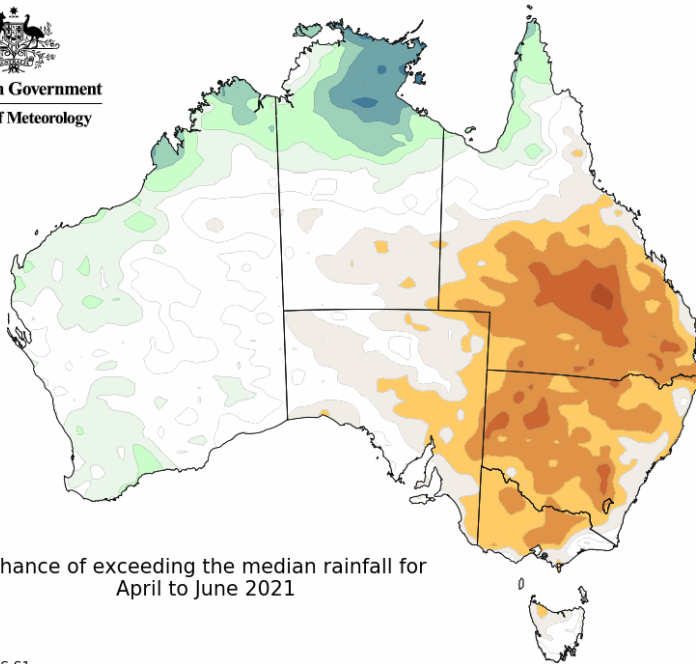
**Queen's Birthday**  
Monday 14 June 2021

### Climate Outlook: April to June 2021

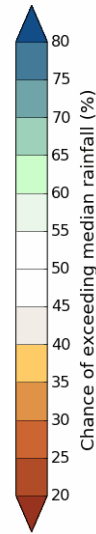
The Australian Government Bureau of Meteorology is forecasting a drier and warmer than average April to June for inland parts of NSW and Victoria:



**Australian Government**  
Bureau of Meteorology



Chance of exceeding the median rainfall for April to June 2021

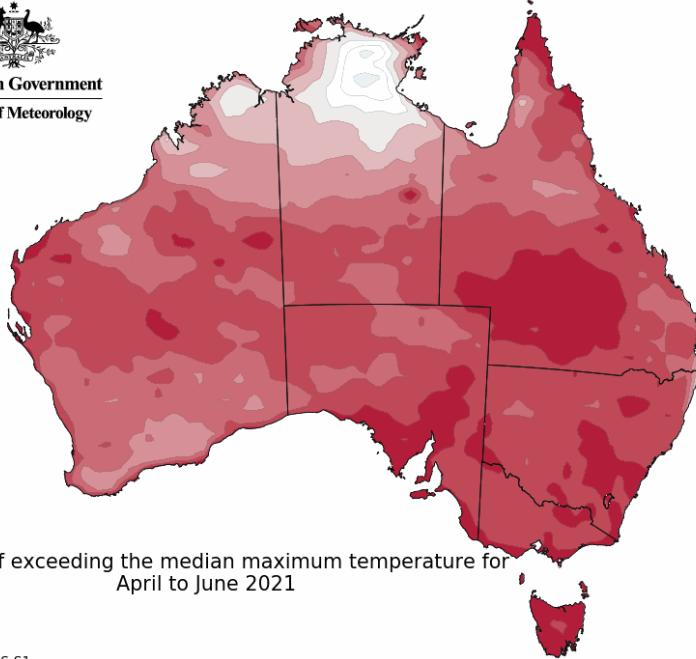


Model: ACCESS-S1  
Base period: 1990-2012

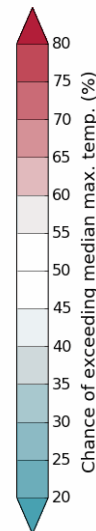
Model run: 29/03/2021  
Issued: 01/04/2021



**Australian Government**  
Bureau of Meteorology



Chance of exceeding the median maximum temperature for April to June 2021



Model: ACCESS-S1  
Base period: 1990-2012

Model run: 29/03/2021  
Issued: 01/04/2021