

From the CEO

The volume of water pumped by WMI in November and December 2020 was slightly higher than the previous year, however year to date (July to December) was 4% below the 5-year average.

The climate outlook for the Sunraysia region during February - April 2021 is likely to see above average rainfall and temperatures.

The Murray Darling Basin Authority has indicated that the River Murray will continue to flow at maximum capacity over summer to meet demand for water through the system, and together with wetter and warmer weather, has resulted in water quality problems including blue-green algae. Snails have also continued to be a problem in certain areas.

WMI updates its website with the latest WaterNSW Blue Green Algae alerts and uses SMS if the alerts are heightened or urgent. It is important that customers manage water quality issues by ensuring they have tank storage with at least 2 weeks supply of water or where customers are leasing or renting out their properties to keep the leasee and/or agent up to date. Customers are advised to monitor tank supply levels and be prepared to isolate supply if necessary.

2020 AGM update

The WMI AGM was held on 24 November 2020.

All the business proposed was successfully completed including:

- Appointment of two Member Directors (Matt Cottrell as Buronga Director and Mick Goodrem as General Member Director); and

- Consideration of the 2020 Audited Financial Statements and auditor's report.

The Board and management would like to thank all shareholders who attended or submitted proxies for the 26th AGM proceedings.

WMI would also like to thank Di Mead, Regional Manager for the Murray Darling Basin Authority's new Mildura office, who spoke at the conclusion of the AGM.

Shareholders can access the AGM minutes and Di Mead's presentation including her answers to the questions taken on notice, in the shareholder portal on WMI's website.

A copy of the 2020 Annual Report was mailed to each shareholder and is also available on the website.



Second Quarter Invoice
2020/21

due for payment:
4.30pm on
Friday 12 February 2021

On-call Officer
24 hours/365 days
Ph: 0428 596 428

Office Hours: 9.00am to 4.30pm
Monday to Friday, excl public holidays

Contact us:
T: (03) 5027 4953
F: (03) 5027 4880
E: enquiries@westernmurray.com.au
www.westernmurray.com.au

Upcoming office closures:

Australia Day
Tuesday 26 January 2021

Good Friday – 02 April 2021
Easter Monday – 05 April 2021

Board elects David Whitbread as Chair

The WMI Board, at their first meeting following the AGM, held on 3 December 2020 elected:

- David Whitbread as Chair; and
- Allison McTaggart as Deputy Chair.

Second quarterly invoice due for payment

The second quarter invoice for 2020/21 is now available and due for payment on or before Friday 12th February 2021.

Please contact the office before the due date if there are any difficulties in prompt payment of accounts.

Additional Water Fee reminder

Water usage above allocation is billed quarterly at \$1,200/ML.

Please ensure you **always have a positive water allocation balance** in order to meet your needs for the current irrigation season. Customers should contact the friendly office staff for more information.

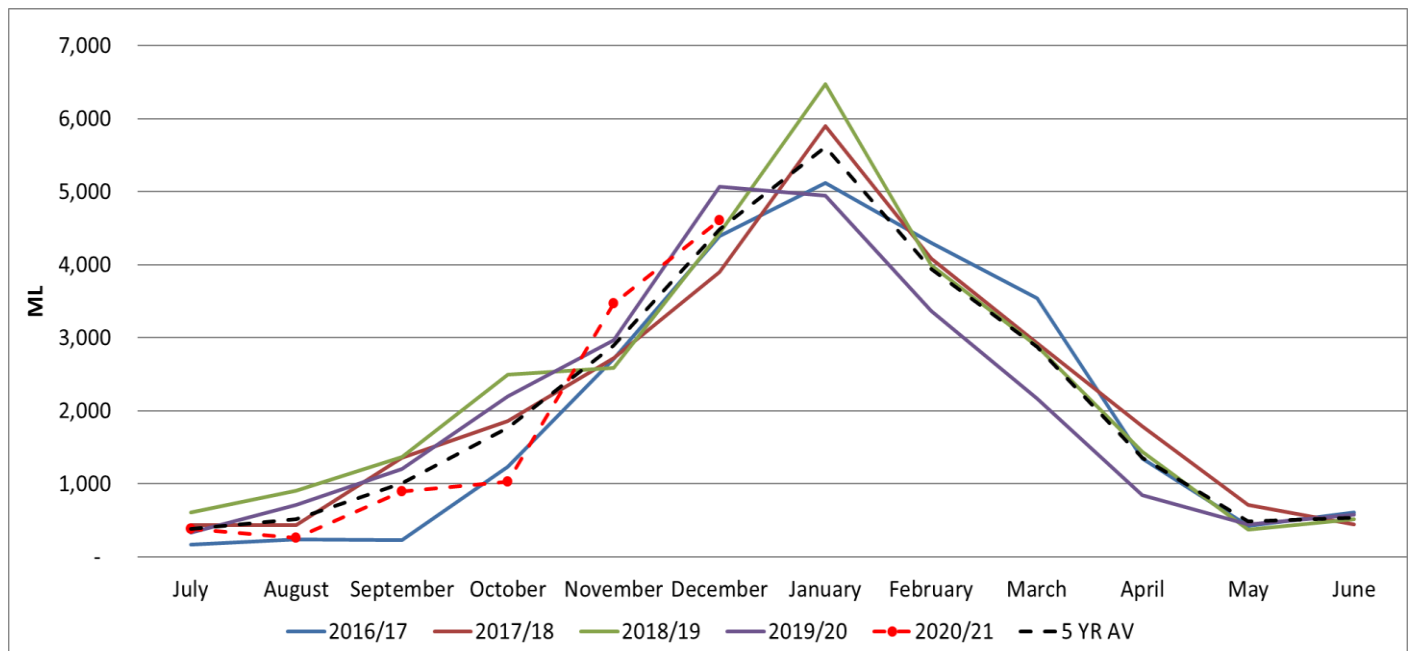
Water ordering & accuracy is important

To ensure WMI supply system works effectively, accurate water orders must be placed by irrigation customers.

It is important that a water order is placed correctly before commencing irrigation and that the flow rate and duration is adhered to. Over ordering can cause other irrigators' orders to be rejected, under ordering can overload the system causing a loss of water pressure or in the case of Buronga cause the pump station to shutdown due to a leakage warning.

If a meter isn't recording correctly an estimate of water use will be used for billing purposes. Estimates are based on water ordered and/or historical use.

Total Water Pumped over 5 Years



Climate Outlook: February to April 2021

The Australian Government Bureau of Meteorology is forecasting wetter and warmer conditions for some parts of Australia:

