



Western Murray Irrigation Ltd

Newsletter

October 2021

From the CEO

The welcome rain in the first quarter of 2021/22 has resulted in a 9% decrease below the 5-year average of the volume of water pumped by WMI.

Murray storages are almost full, and the Menindee Lakes are full for the first time in a decade.

The Bureau of Meteorology has recently raised a La Nina Alert. La Nina events increase the chances of above-average rainfall for northern and eastern Australia during spring and summer.

The Sunraysia climate outlook for November to January is likely to be wetter and warmer than average.

The return of wet and warm weather can lead to water quality problems such as blue-green algae or blackwater events. WMI will update our website with the latest alerts or use SMS if the alerts are heightened or urgent. It is important that customers manage water quality issues by ensuring they have tank storage with at least 2 weeks supply of water or where customers are leasing or renting out their properties to keep the leasee and/or agent up to date.

WMI continues to maintain a COVID-19 free workplace. Please follow all rules when entering WMI premises including checking in and mask wearing. At times we close our doors to the public due to government orders or when the risk is high such as during the latest outbreaks in Dareton and Mildura. All our staff are still available to assist and can be contacted by phone and email. We appreciate your understanding.

Meter upgrade & telemetry project update

WMI has completed the installation of Siemens meters and telemetry poles at all eligible outlets in Buronga, Coomealla and Curlwaa. System monitoring and testing continues with data range and solar power adjustments to the telemetry poles.



The new meter and telemetry system receives minor upgrades such as the double solar panels (pictured above)

Water ordering & accuracy is important

To ensure WMI supply system works effectively, accurate water orders must be placed by irrigation customers (with meters 80mm and above).

It is important that a water order is placed correctly before commencing irrigation and that the flow rate and duration is adhered to. Over ordering can cause other irrigators' orders to be rejected, under ordering can overload the system causing a loss of water pressure or in the case of Buronga cause the pump station to shut down due to a leakage warning.

First Quarter Invoice 2021/22
Due for payment:
4.30pm on
Monday 15 November 2021

Office Hours: 9:00am to 4:30pm
Monday to Friday, ex. public holidays
Contact us:

T: (03) 5027 4953

F: (03) 5027 4880

Upcoming office closure:

Christmas Service

Closed: Friday 24 December 2021 to
Monday 3 January 2022 inclusive

On-call Officer
24 hours/365 days
Ph: 0428 596 428

www: westernmurray.com.au
E: enquiries@westernmurray.com.au

On-call Officer
24 hours/365 days
Ph: 0428 596 428



If a meter isn't recording correctly an estimate of water use will be used for billing purposes. Estimates are based on water ordered and/or historical use.

Winter maintenance program 2021 update

Our scheduled winter maintenance program for the 2021 winter period is almost complete, and includes:

Buronga

- Install new pump station mag-meter (complete)
- Install low-river pump for Mildura weir maintenance 12-30 July (aborted)
- Alcheringa relift – upgrade PLC – in progress

Coomealla

- Install six new pump station mag-meters (complete)
- Replace motor on pump C – for overhaul (complete)
- Relift – upgrade PLC (complete)
- Relift – bearings replace on pump 2 (Re-assessed - okay)

Curlwaa

- Install new pump station mag-meter (complete)
- Balance tower inspection and maintenance (deferred until next winter)

Mourquong

- WMI continues to maintain the Mourquong pump station, pipelines and outlets based on a service agreement.

WMI endeavours to minimise any interruptions and will alert customers to any planned or unplanned events.

Planned improvements to Coomealla water delivery

There have been significant changes to customer demand including an increase of removed or redundant outlets; and increased farm sizes utilising single outlets.

Pipeline upgrade

Hydraulic modelling has confirmed the area north of Alba Road in Coomealla as already having low pressure problems during peak season. There is significant redevelopment of this area, and more land is being put back into production. The pipeline running from Tip Road/Gunya Road junction to Alba Road/Gunya Road Junction is planned to be upgraded in winter of 2022.

Cyclone filter trial

A cyclonic filter will be installed as a trial to combat a localised snail problem near Bernarra Road.

2021 AGM

WMI is delighted to invite its shareholders to its 27th AGM this year. The 2021 **27th AGM** will be held as follows:

6:00pm

Tuesday 30 November 2021

The Auditorium

Coomealla Memorial Sporting Club

First Quarter Invoice 2021/22

Due for payment:
4.30pm on

Monday 15 November 2021

Office Hours: 9:00am to 4:30pm
Monday to Friday, ex. public holidays
Contact us:

T: (03) 5027 4953

F: (03) 5027 4880

On-call Officer
24 hours/365 days
Ph: 0428 596 428

www: westernmurray.com.au
E: enquiries@westernmurray.com.au

Upcoming office closure:

Christmas Service

Closed: Friday 24 December 2021 to
Monday 3 January 2022 inclusive

On-call Officer
24 hours/365 days
Ph: 0428 596 428



Western Murray Irrigation Ltd

Newsletter

October 2021

The WMI Board will present items including:

- A declaration of the appointment of Member Directors; and
- The 2021 Audited Financial Statements

Shareholders are welcome to join the Board and management for networking and refreshments at the conclusion of the meeting.

Shareholders will be receiving detailed AGM information and an invitation in the mail.

Note: COVID-19 regulations in NSW are constantly changing and may impact on meeting logistics. COVID-19 entry restrictions apply to the Coomealla Club, please check their website for details.

First quarterly invoice due for payment

The first quarter invoice for 2021/22 is now available and due for payment on or before Monday 15 November 2021.

Please contact the office before the due date if there are any difficulties in prompt payment of accounts.

Additional Water Fee reminder

Water usage above allocation is billed quarterly at \$1,200/ML.

Please ensure you **always have a positive water allocation in your account**, in order to meet your needs for the current irrigation season.

Customers should contact the friendly office staff for more information.

First Quarter Invoice 2021/22
Due for payment:
4.30pm on
Monday 15 November 2021

On-call Officer
24 hours/365 days
Ph: 0428 596 428

Office Hours: 9:00am to 4:30pm
Monday to Friday, ex. public holidays
Contact us:
T: (03) 5027 4953

F: (03) 5027 4880

www: westernmurray.com.au
E: enquiries@westernmurray.com.au

Upcoming office closure:

Christmas Service

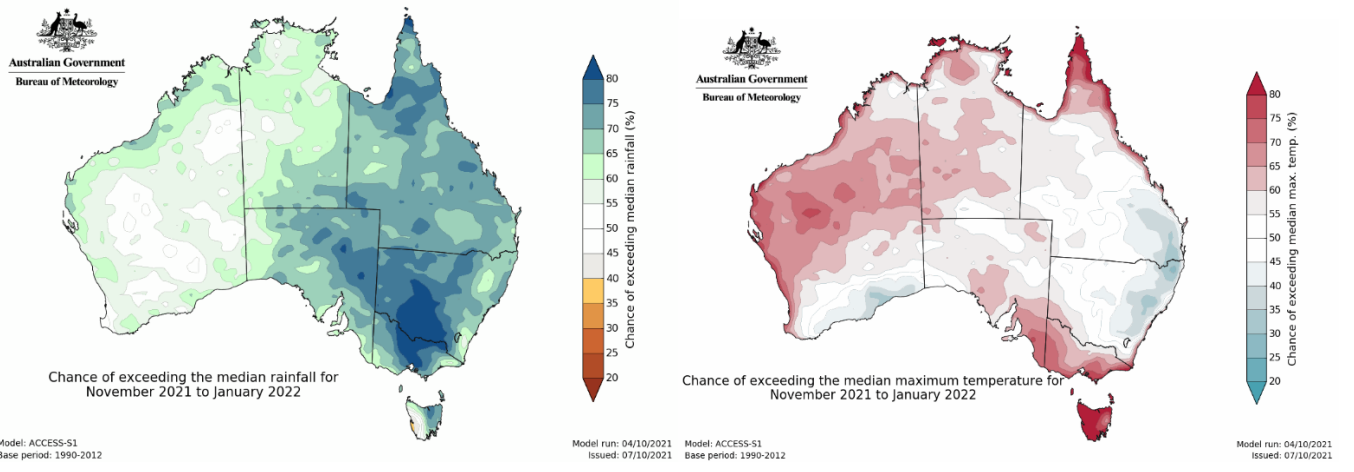
Closed: Friday 24 December 2021 to
Monday 3 January 2022 inclusive

On-call Officer
24 hours/365 days
Ph: 0428 596 428

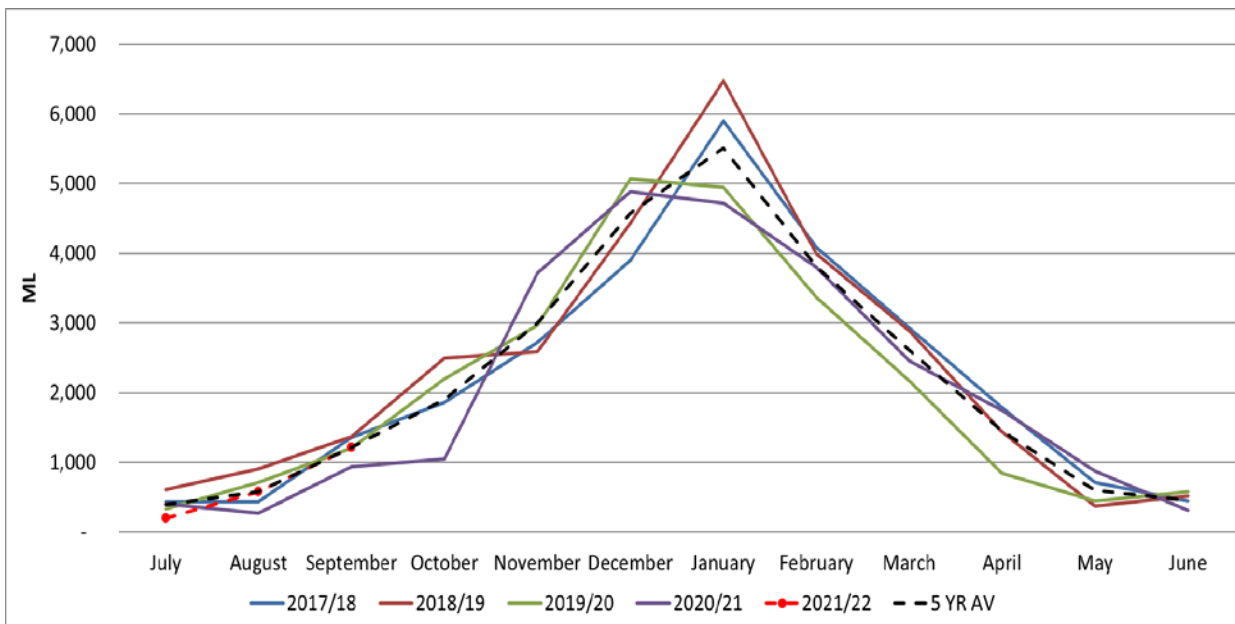


Climate Outlook: November 2021 to January 2022

The Australian Government Bureau of Meteorology is forecasting wetter and warmer conditions for many parts of Australia:



Total Water Pumped over 5 Years



First Quarter Invoice 2021/22
 Due for payment:
 4.30pm on
 Monday 15 November 2021

Office Hours: 9:00am to 4:30pm
 Monday to Friday, ex. public holidays
 Contact us:
 T: (03) 5027 4953
 F: (03) 5027 4880

Upcoming office closure:
Christmas Service
 Closed: Friday 24 December 2021 to
 Monday 3 January 2022 inclusive

On-call Officer
 24 hours/365 days
 Ph: 0428 596 428

www: westernmurray.com.au
 E: enquiries@westernmurray.com.au

On-call Officer
 24 hours/365 days
 Ph: 0428 596 428