

### From the CEO

WMI has welcomed new Federal Minister for the Environment and Water, The Hon Tanya Plibersek MP during her first southern basin tour.

Important issues discussed included addressing the deliverability and shortfall risk (providing water past the choke in times of high demand) and the implementation of the Basin Plan without further water buybacks.



Federal Water Minister Tanya Plibersek and WMI CEO Judith Damiani

The Murray Darling Basin Authority (MDBA) held a successful June conference in Mildura. Topics included:

- Future of the basin
- Basin water compliance
- Seasonal outlook
- Deliverability, shortfall risk and the Barmah Choke
- Economic and environmental outcomes
- Innovation

Troy Grant, Australia's Inspector-General of Water Compliance heavily criticised the NSW government for failing to meet its obligation under the Murray Darling Basin Plan to have accredited Water Resource Plans in place. This prevents the Inspector-General legally enforcing compliance issues. He highlighted that the Commonwealth Minister's step-in powers could be used to intervene if the situation continues.

MDBA's Mildura-based Tyson Milne spoke about the massive sand slug in the Barmah-Millewa reach of the Murray River and how within 10 years it will have a major impact on delivering water downstream. Six mitigation options are being explored and a final report is expected in December 2022.



Judith Damiani, WMI CEO, addressing MDBA conference delegates at the Wentworth junction.

#### Fourth Quarter Invoice 2021/22

due for payment:  
4.30pm on  
Monday 8 August 2022

**On-call Officer**  
24 hours / 365 days  
Ph: 0428 596 428

**Office Hours: 9.00am to 4.30pm**  
Monday to Friday, excl public holidays

Contact us:  
T: (03) 5027 4953  
E: [enquiries@westernmurray.com.au](mailto:enquiries@westernmurray.com.au)  
[www.westernmurray.com.au](http://www.westernmurray.com.au)

#### Upcoming office closures:

Labour Day  
Monday 3 October 2022

### \$2 million Coomealla Pipeline Upgrade Enters Construction Phase

Laterals 36/39 (Gunya Road, between Tip & Alba Roads) and 40 (between Comebunye & Tip Roads) will be upgraded to improve service delivery.

Local Sunraysia company, All State Earthworks, has been appointed as the construction contractor following a selective tender process earlier this year.

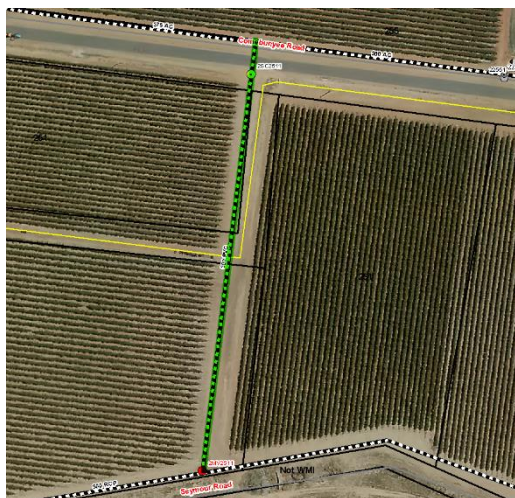
All State Earthworks will be conducting preliminary works including surveying, service locations, and assembling materials from early July.

Road bores, pipeline construction, cut overs and commissioning/decommissioning will take place during July and August.

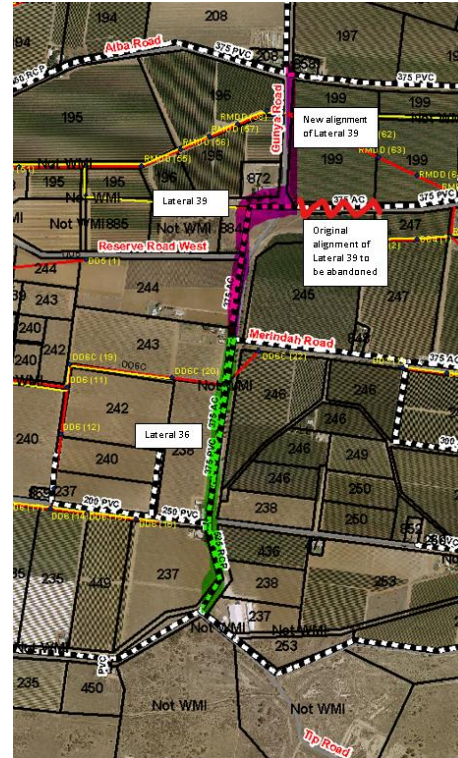
Restoration of surfaces and practical completion is expected in early September.

Customers and landholders that may be affected by construction activity or water supply shutdowns will be contacted directly with details and assistance. Traffic control measures will be in place during various stages of the construction phase to provide for your safety.

We thank you for your patience and understanding during these construction activities.



Lateral 40 is currently 300mm PVC; to be replaced with 450mm high density polyethylene to improve service delivery.



Lateral 39 is currently 375mm Asbestos-Cement pipe (AC); to be replaced with 630mm PE and realigned to continue along Gunya Rd directly to Alba Rd.

Lateral 36 is currently installed with 525mm re-enforced concrete pipe (RCP) and 375mm polyvinyl chloride (PVC); this will be replaced with 710mm high density polyethylene pipe (PE).

### WMI Charges Review Update

WMI would like to advise that the Charges review is coming to a conclusion.

This comprehensive (and long-running) review is the first in WMI's 27-year history and has included:

- customer consultation;
- a review of other irrigation infrastructure operators' charges;
- an independent review of the Asset Replacement Fund and its associated fees; and
- expert consultant assistance with the creation of detailed customer impact modelling.

A final proposal will be provided to the WMI Board for consideration at their meeting on 25 August 2022.

Once adopted by the Board, an extensive customer communication and engagement program will follow.



### Fourth Quarterly Invoice Due for Payment

The fourth quarter invoice for 2021/22 is now available and due for payment on or before Monday 8 August 2022.

Please contact the office before the due date if there are any difficulties in prompt payment of accounts.

To have your quarterly invoices paid by direct debit from a nominated bank account, contact the office for a form and your invoice will always be paid on time.

### Additional Water Fee Reminder

Water usage above allocation is billed quarterly at \$1,200/ML (or part thereof).

Please ensure you **always have a positive water allocation balance**. Customers should contact the friendly office staff for more information.

### Almost Half of Audited NSW Water Users Overdraw their Water Account

The NSW Natural Resources Access Regulator (NRAR) is continuing to monitor compliance across NSW to address the issue of water users overdrawing their water accounts.

NRAR's Director of Water Regulation Graeme White said "Water accounts are like a bank account, not a credit card. You can't take more out of them than you have in them.

It's a common misconception that you can purchase water after you've pumped. That's not true, you have committed an offence by overdrawing your account."

Out of 263 audits:

- 101 accounts had been overdrawn to a minor degree, these water users were given advice and information; and
- 13 cases resulted in more serious enforcement action including a payment of \$125,000 to NRAR and \$80,000 for a community project.

### WMI Water and Administration Charges 2022/23

WMI customers will have received a mailed copy of the Schedules of Charges for 2022/23 in June. A copy is also available on the website.

These charges are determined by the WMI Board each year as part of their budgeting process.

Compared to 2021/22 the main charges have either remained the same or increased by around 5% with a summary as follows:

BURONGA *	2022/23 \$	2021/22 \$	Variance %
Access Fee #	125.70	119.60	5.1
Casual Users Access Fee +	212.00	203.00	4.4
Asset Replacement Fund Fee ^	22.00	20.92	5.2
Infrastructure Loan Repayment Fee ^	15.00	15.00	0
Stock & Garden ^	498.00	474.00	5.1

COOMEALLA *	2022/23 \$	2021/22 \$	Variance %
Access Fee #	74.70	71.10	5.1
Casual Users Access Fee +	127.00	123.00	3.3
Asset Replacement Fund Fee ^	14.28	14.28	0
Joint Venture Repayment Fee ^	8.20	9.20	-10.9
Stock & Garden ^	370.00	352.00	5.1

CURLWAA *	2022/23 \$	2021/22 \$	Variance %
Access Fee #	60.70	57.70	5.2
Casual Users Access Fee +	93.00	88.00	5.7
Asset Replacement Fund Fee ^	10.48	9.96	5.2
Stock & Garden ^	401.00	381.00	5.3

\* The complete Schedule of Charges for 2022/23 is available on the WMI website, at the Office, or upon request. Not all fees and/or charges are listed above.

# The Access Fee will be divided evenly across the first three Invoices.

^ These fees plus the Fixed and Variable Government Charges are invoiced quarterly.

+ The Casual Users Access Fee, Water Usage Above Access Fee, Membership Levies and Additional Water Fee – Fee for Service are levied in the final invoice.

### **Fixed and variable government charges to change**

The fixed and variable NSW government charges will change due to a delayed IPART (NSW Independent Pricing and Regulatory Tribunal) determination.

WMI will re-issue the Schedule of Charges as soon as practical in anticipation of a 1 October 2022 start date.

If you require further assistance in understanding these charges you can contact the office staff for more information.

### **Winter Maintenance Update**

We have our scheduled winter maintenance program underway with the main tasks including:

#### **Buronga**

- Overhaul motor C
- Overhaul pump D
- Install vibration monitoring
- Replace control room air-conditioner (complete)
- Install low-river pump for Mildura weir maintenance 3 weeks from 27 June; pump station capacity is restricted to 100L/s (complete)
- Relift – upgrade PLC (complete); install vibration monitoring.

#### **Coomoalla**

- Replace pump C with new KSB pump (mid-August)
- Balance tower inspection and maintenance (complete)
- Pump F1 overhaul (vibration)
- Relift – overhaul pump/motor A.

#### **Curlwaa**

- Pump A overhaul
- Balance tower inspection and maintenance (complete)
- Pump C & G, check/replace suction/valve
- Transformer update (Essential Energy)

#### **Mourquong**

- WMI continues to maintain the Mourquong pump station, pipelines and outlets based on a service agreement.
- Encasement of suction pipe in Pit 1 (complete).

WMI endeavours to minimise any interruptions and will alert customers to any planned or unplanned events.

### **Delivery Entitlements can be Temp Traded**

The annual temporary transfer of Delivery Entitlements (DEs) from one customer in the same irrigation area to another customer in the same irrigation area is possible.

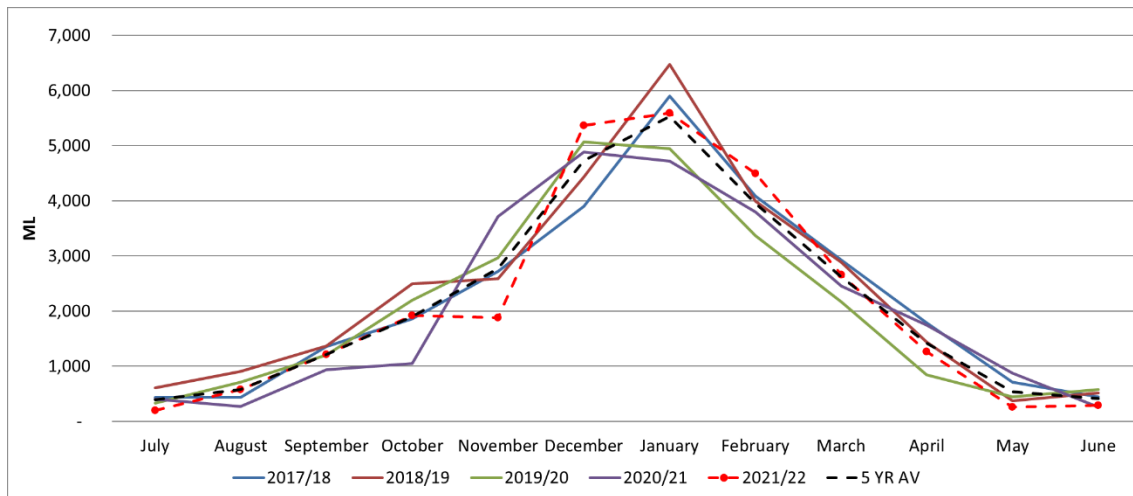
A temporary transfer means the customer who receives the DEs enjoys the reduced cost of using water (for one season) by avoiding or reducing the impact of the higher Casual Users Access Fee, while the customer who acquits the DEs enjoys a reduced overall WMI bill (for one season).

WMI staff are happy to assist customers understand the costs and benefits of any such temporary transfers. If the trade is a WMI facilitated trade, any trades will be based on demand, availability, and a lessor's lodgment date (first in first served).

Transfer forms must be lodged by Friday 23 September 2022, with the transfer applying for the whole of the 2022/23 season.

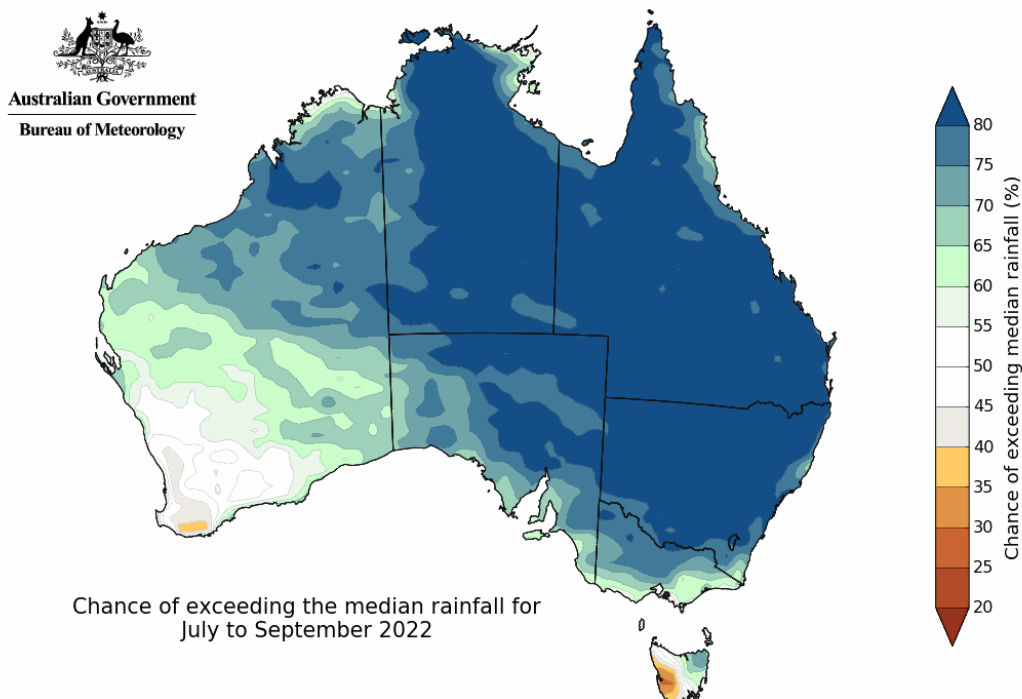
### Total Water Pumped Over 5 Years

The volume of water pumped by WMI in the 2021/22 year was 25,691ML, 2.4% higher than the previous year. Total water used was 1.4% below the 5-year average.



### Climate Outlook: July to September 2022

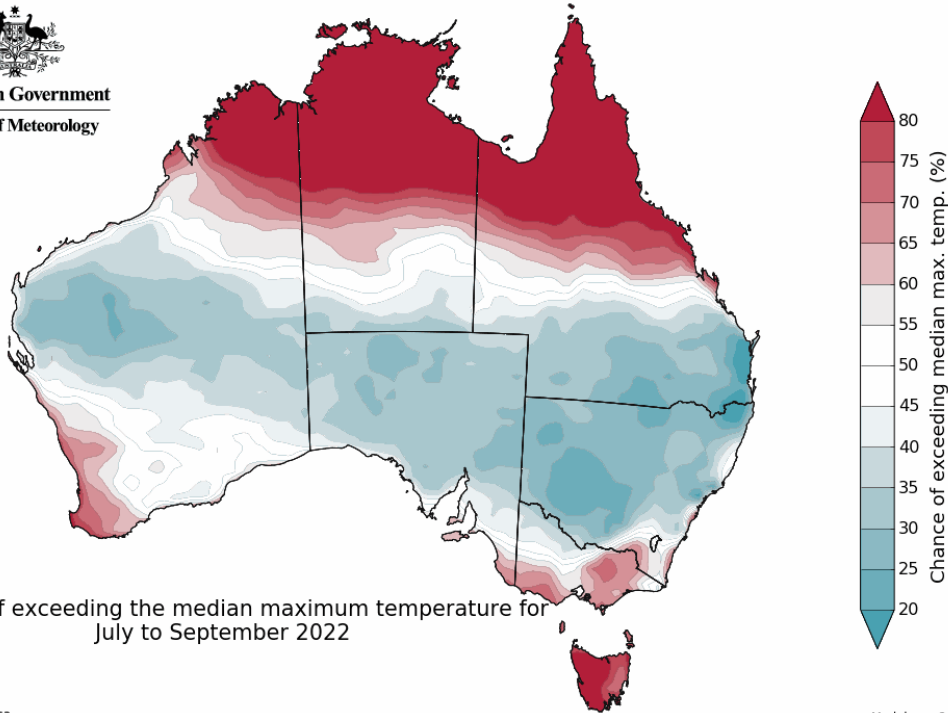
The Bureau of Meteorology is forecasting above average rainfall for most of Australia for the July to September 2022 period:



Maximum temperatures for Sunraysia are forecast to be below average though minimum temperatures are forecast to be above average for July to September 2022.



**Australian Government**  
**Bureau of Meteorology**




**Australian Government**  
**Bureau of Meteorology**

