

POLLUTION INCIDENT RESPONSE MANAGEMENT PLAN AUGUST 2024



Distribution

An electronic version of this document can be found on WMI server:

- F:/Annual Reports/EPA Return and Water Approval Annual Compliance/30June, 2024/EPA

Printed copies:

1. WMI Depot Office
2. WMI Main Office

Reviews and Amendments

This document is subject to a review annually, and/or amended as necessary.

Action	Date	Name	Signature
Review and Amendment: All contacts updated, acronyms removed, terminology updated. Reference to individuals changed to relevant positions.	29Aug2016	David Hilton	
Review Annual	22Aug2017	David Hilton	
Review Annual Changes to WHS act and regulations	20Aug2018	David Hilton	
Review Annual	20Aug2019	David Hilton	
Review Annual Company Logo, Generators and Fuel Tanks added, Updated phone numbers, file location	10Aug2020	David Hilton	
Review Annual	05Aug2021	David Hilton	
Review Annual Updated Phone numbers and web page links.	11Aug2022	David Hilton	
Review Annual Updated phone numbers and web page links	11Aug2023	David Hilton	
Review Annual Updated phone numbers and web page links	19Aug24	David Hilton	

EPA requirements

All employees must have a full understanding of:

- Pollution Incident Response Management Plan
- Chemical Control & Contingency Plan

Both plans must be activated as part of employee training annually:

Action	Date	Outcome
PIRMP & CC&CP activated	15Jul2016	Incorrect phone numbers, web-sites. Confusing terminology and acronyms. Reference to individuals no longer employed.
PIRMP & CC&CP activated	30Aug2017	OK
PIRMP & CC&CP activated	24Aug2018	OK
PIRMP & CC&CP activated	26Aug2019	OK
PIRMP & CC&CP activated	20Aug2020	New procedure for generators and fuel tanks
PIRMP & CC&CP activated	05Aug2021	OK
PIRMP & CC&CP activated	12Aug2022	OK – Broken Hill Hospital phone # change, web page links incorrect.
PIRMP & CC&CP activated	11Aug2023	OK – Drainage Officer changed to Infrastructure Officer, Link to server changed
PIRMP & CC&CP activated	19Aug2024	OK



POLLUTION INCIDENT RESPONSE MANAGEMENT and CHEMICAL CONTROL & CONTINGENCY PLANS

Response Hierarchy & Contact Details

Hierarchy		Name	Telephone Number 24hrs
1	If there is an immediate threat to human health or property.	Emergency Services: Fire & Rescue, NSW NSW Police NSW Ambulance	000
2	No immediate threat to human health or property, or once 000 has been called	Wentworth Shire Council	(03) 5027 5027
3	As above	Environment Protection Authority	131 555
4	As above	Through A&E Department: Ministry of Health, Public Health Unit, Broken Hill Base Hospital - ask for Public Health Officer on call. If no answer call mobile number:	(08) 8080 1300 0417 685 259
5	As above	SafeWork NSW	131 050
6	If 000 not already called	Fire & Rescue, NSW	1300 729 579
7	Large fuel spills	Cleanaway - Emergency Spills Response	1800 774 557
8		WMI - Business hours WMI – Civil Infrastructure Officer WMI - On-Call Officer WMI – Operations Supervisor WMI – Executive Manager Operations	(03) 5027 4953 0499 021 956 0428 596 428 0418 723 470 0429 183 619

Normal Monitoring – Level, Action & Response

Level	Action	Communication	Monitoring
Notification	As soon as possible, or within 24 hrs, notify EPA and act on their advice.	EPA Ph: 131 555, reported in annual return.	Upon EPA advice
Action	As soon as possible, or within 24hrs, notify EPA and act on their advice. Isolate area of known contamination, determine type of chemical and best method to reduce further contamination, may include pumping to a low-risk outfall, deactivating product with soil or dilution with water.	EPA Ph: 131 555, wider communication at WMI discretion, reported in annual return.	On EPA advice, further samples analysed on completion of rectification/minimisation activity.



Section 1

POLLUTION INCIDENT RESPONSE MANAGEMENT PLAN

Section 2

CHEMICAL CONTROL & CONTINGENCY PLAN

Pollution Incident Response Management Plan

Western Murray Irrigation

Curlwaa, Coomealla and Buronga Service Areas



Contents

Distribution	1
Reviews and Amendments.....	1
EPA requirements.....	2
1.0 Introduction	7
2.0 Description & Likelihood of Hazards	7
3.0 Pre-emptive Actions Taken	8
4.0 Inventory of Pollutants.....	8
5.0 Safety Equipment.....	8
6.0 Actions During or Immediately After a Pollution Incident	9
7.0 Communicating with Neighbours & Local Community	10
8.0 Minimising Harm to Persons.....	11
9.0 Maps	11
10.0 Staff Training.....	11
11.0 Location of PIRMP	11
12.0 Testing & Updating the PIRMP.....	11

Appendices

Appendix 1: Curlwaa, Coomealla & Buronga Drainage Infrastructure Maps

1.0 Introduction

This *Pollution Incident Response Management Plan* (PIRMP) provides a format for Western Murray Irrigation (WMI) staff to follow when responding to a pollution incident. Linked to WMI's *Environment Protection Licence* (EPL 4659) and WMI's *Chemical Control and Contingency Plan* (CCCP), this PIRMP also includes actions to ensure appropriate co-ordination with other relevant response agencies.

2.0 Description & Likelihood of Hazards

WMI services a range of irrigated horticultural and viticultural properties across three irrigation areas; Curlwaa, Coomealla and Buronga.

The serviced land is located on the escarpment and in some cases on the floodplain of the Murray River and the Darling River. Drainage derived from irrigation is primarily transported to inland basins (Fletcher's and Holland's Lakes). The exception is during particularly high river flows, when drainage water may be pumped to the Darling River through Fletcher's Creek.

Stormwater flows predominantly outflow to the floodplains of either the Murray or Darling Rivers.

Being primarily a horticultural and viticultural area, potential hazards are mainly spills or excessive use of chemicals used in the husbandry of those crops or in weed control along the water supply infrastructure. These chemical hazards are addressed in WMI's CCCP. The trigger values for notification and action are stated in the EPL (Section 4, O 3.5).

WMI's service area sits astride some 15km of the Silver City Highway. A significant number of B-double and semi-trailer sized trucks use this road regularly for transportation of large volumes of potential pollutants including:

- Wine
- Fuel and oils
- Weed and pest control chemicals
- Concentrated liquid fertilisers

Storage of 25KL diesel at Coomealla pump station, close to the bank of the Murray River.

WMI's EPL identifies 6 monitoring/discharge points (Section 2, P1.2) and provides a list of pollutants that WMI must monitor for at those points (Section 5, M2.2), either regularly during the year, or based on flow events.

There is also a small risk that saline drainage water could be inadvertently diverted to the river rather than to the inland drainage lakes.

3.0 Pre-emptive Actions Taken

As WMI has no control over the actions of its growers, pre-emptive actions taken to minimise or prevent any risk of harm to human health or the environment are restricted to WMI's immediate operations.

Diesel Storage at Curlwaa and Coomealla Pump stations

All fuel tanks and internal generator tanks are double bunded, with an indicator if the internal tank has been breached. Generators and fuel tanks are inspected monthly. Spillage kits are available on-site. At Coomealla pump station an earthworks catchment has also been constructed to temporarily contain a spillage of 25KL of diesel in the event of a catastrophic failure; in this case the earthworks will need to be emptied and contaminated soil removed by a contractor (Cleanaway) to prevent any seepage to the river.

Chemicals

WMI maintains a chemical register and strict protocols are followed by staff when using chemicals near open waterways and infrastructure, as detailed in the CCCP.

Saline Drainage Water

The drainage system has a number of pumps and valves that control flow directions and volumes. A number of these valves act as isolation valves to control flows as needed.

In the event of an emergency, contact WMI Civil Infrastructure Officer.

Outflow Monitoring

When outflows to the floodplain reach sufficient volume, a monitoring event is triggered as per the EPL. WMI's EPL identifies 6 monitoring/discharge points (Section 2, P1.2) and provides a list of pollutants that WMI must monitor for at those points (Section 5, M2.2).

The steps to be taken if detected limits are exceeded are detailed in Section 6 of this PIRMP.

4.0 Inventory of Pollutants

WMI maintains a chemical register of its own chemicals on hand. WMI also reviews the crops grown in its irrigation districts and surveys the chemical resellers to determine the chemicals currently in use by the growers.

WMI uses this information to update its CCCP (last update Aug 2018).

5.0 Safety Equipment

As detailed in the CCCP, WMI staff are provided with and instructed to wear the appropriate personal protective equipment (PPE) for the chemicals that they handle and use.

Handling and clean-up of chemical spills outside the control of WMI is to be left to the appropriate emergency services.

6.0 Actions During or Immediately After a Pollution Incident

If the incident presents an immediate threat to human health or property, call Emergency Services on 000. This call will alert and co-ordinate Fire & Rescue NSW, NSW Police and NSW Ambulance Service.

If the incident does not require emergency services, or once the 000 call has been made, notify the relevant authorities as judged appropriate to the nature of the incident, in the order shown in Table 1. The 24-hour hotline for each authority is given where available.

Table 1 Response Hierarchy & Contact Details

Hierarchy	Name	Telephone number (24hr)
(1) If there is an immediate threat to human health or property	Emergency Services (Fire & Rescue NSW, NSW Police, NSW Ambulance Service)	000
(2) No immediate threat to human health or property, or once 000 has been called	Wentworth Shire Council	03 5027 5027
(3) as above	EPA	131 555
(4) as above	Ministry of Health, Public Health Unit - Broken Hill Base Hospital - ask for Public Health Officer on call, if no answer call the mobile number:	(08) 8080 1300 0417 685 259
(5) as above	SafeWork NSW	131 050
(6) If 000 not already called	Fire & Rescue NSW	1300 729 579
(7)	WMI – business hours 24 hr officer on call Civil Infrastructure Officer Operations Supervisor Executive Manager Operations Chief Executive Officer	(03) 5027 4953 0428 596 428 0499 021 956 0418 723 470 0429 183 619 0438 394 971

During a normal monitoring event, if the concentration of a pollutant listed in Schedule One exceeds either the Notification or Action Level, as detailed in the CCCP, the following shall be carried out (Table 2).

Table 2 Normal Monitoring – Level, Action & Response

Level	Action	Communication	Monitoring
Notification	As soon as possible, or within 24 hrs, notify EPA and act on their advice	EPA Tel. 131 555, reported in annual return	Upon EPA advice
Action	As soon as possible, or within 24 hrs, notify EPA and act on their advice. Isolate area of known contamination, determine type of chemical and best method to reduce further contamination, may include pumping to a low risk outfall, deactivating product with soil or dilution with water.	EPA Tel. 131 555, wider communication at WMI discretion, reported in annual return	On EPA advice, further samples analysed on completion of rectification/minimisation activity.

A written report of any event that may cause potential harm to the environment will be prepared in accordance with the EPL (Section 6, R 2.2). A copy of this report will be given to the EPA within 7 days of the event.

7.0 Communicating with Neighbours & Local Community

Where there is an immediate threat to human health or property, communication with neighbours and the community will be undertaken in conjunction with the Emergency Services and EPA.

If a normal monitoring event has returned a result above a notification or action threshold level, as stated in the CCCP, the EPA will be immediately notified by WMI staff. Communication and additional monitoring events will be undertaken in conjunction with the EPA.

Where there is no immediate threat to human health or property, or if as a result of a normal monitoring event a threshold level is achieved, public notification is at the discretion of WMI.

Where the public could be impacted by contaminated drainage water or liquid from a traffic accident which is moving through WMI’s open channels, WMI will place an alert on their website and door knock potentially affected landholders.

Contacting wider landholders is at the discretion of WMI. If proceeded with, this may be undertaken through traditional and social media.

8.0 Minimising Harm to Persons

The most likely pollution incident identified relates to the use or spill of chemicals either by WMI personnel, growers, or as a result of a traffic accident. The response to such an incident regarding minimising harm to persons is detailed in WMI's *Chemical Control and Contingency Plan*. If required, the response procedure documented in the CCCP will be implemented.

9.0 Maps

Maps showing the main drainage infrastructure for the Curlwaa, Coomealla and Buronga drainage areas are appended (Appendix 1).

WMI maintains a comprehensive Geographical Information System (GIS) with the different types of assets able to be presented as different overlays on a base image.

Information on the location and flow directions within WMI's pumps, pipelines and channels can be sourced from the WMI office during work hours, or after hours by contacting the On-Call Officer on 0428 596 428

10.0 Staff Training

All staff are made aware of the existence and location of this PIRMP as part of their initial employment induction and on an annual basis when it is reviewed.

Each staff member is encouraged to read this PIRMP, so that they become familiar with the intent and response aspects, before they have to put it into practice.

11.0 Location of PIRMP

The master copy of this PIRMP is located on the WMI Server and is accessible to all employees at the following address F:\Annual Reports\EPA and Water Approval Annual Compliance\Date,year\EPA

A hard copy is kept in the WMI main office and the Depot office.

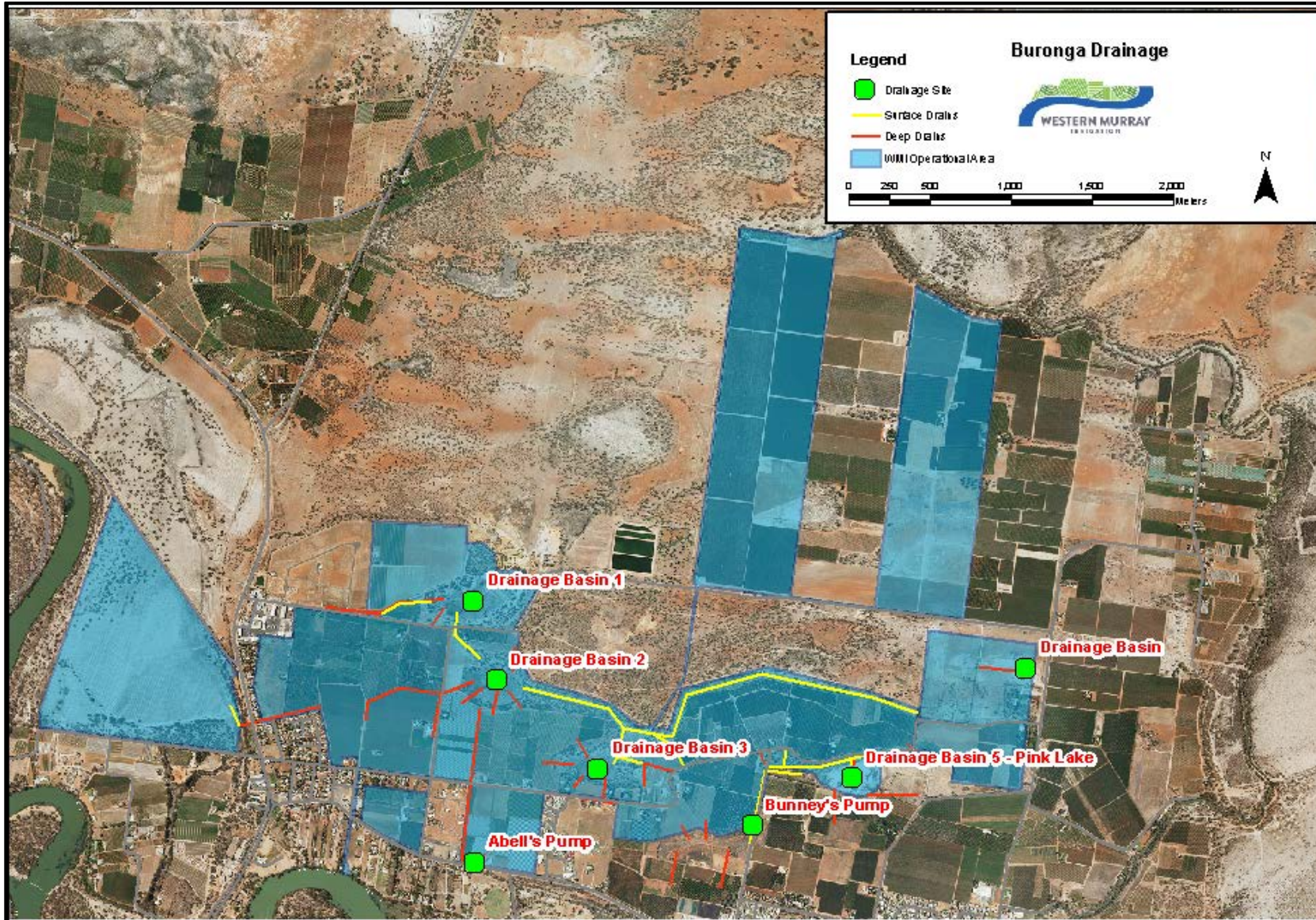
A soft copy is also available on the WMI website: <https://westernmurray.com.au/water-supply/environment/>

12.0 Testing & Updating the PIRMP

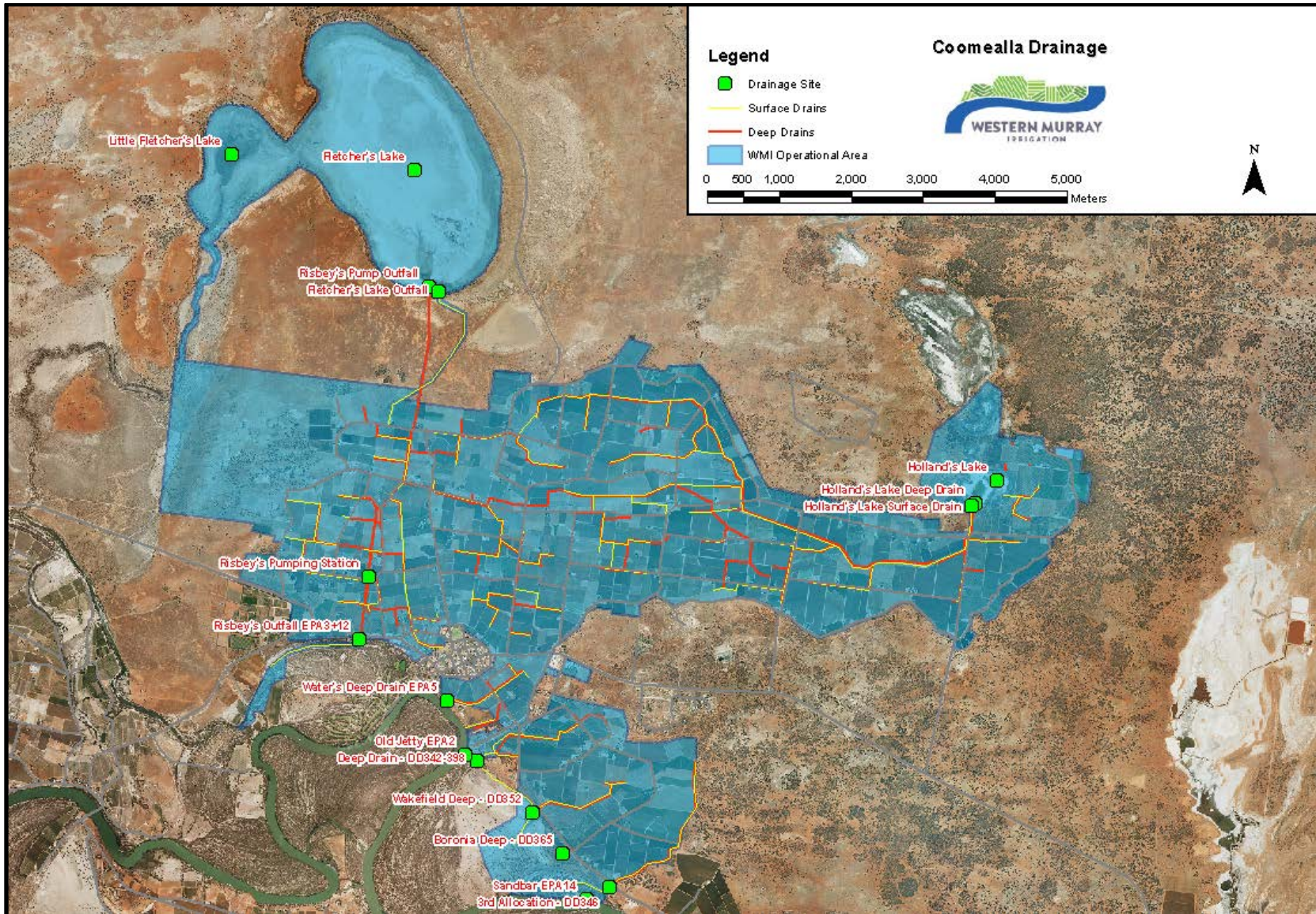
This Pollutant Contingency Plan is reviewed annually and updated as required. The review process incorporates the testing of the currency and validity of the document.

Appendix 1:

Curlwaa, Coomealla & Buronga Drainage Infrastructure Maps



POLLUTION INCIDENT RESPONSE MANAGEMENT PLAN AUGUST 2024



POLLUTION INCIDENT RESPONSE MANAGEMENT PLAN AUGUST 2024

